

정자형성 과정에서 Vascular Endothelial Growth Factor 및 Endothelin-1 발현의 면역조직화학적 연구

부산대학교 의과대학 비뇨기과학교실

The Influences of Vascular Endothelial Growth Factor and Endothelin-1 on Spermatogenesis in Testis

Sung Woo Park, Hyun Jun Park, Nam Cheol Park

Department of Urology, Pusan National University Hospital, Pusan, Korea

Objective: The effects on spermatogenesis by expression of vascular endothelial growth factor (VEGF) and endothelin-1 (ET-1) were investigated.

Materials and Methods: Testicular specimens were obtained from 40 infertile males due to primary testicular failure and from 10 fertile males with other urologic problems. The specimens of infertile males were divided into 4 groups according to histologic findings; Sertoli cell only syndrome (A), maturation arrest (B), hypospermatogenesis (C) and sloughing and disorganization (D). VEGF and ET-1 expression were detected with immunohistochemical stain.

Results: VEGF expression on Leydig cell was detected in all cases. But, VEGF expression rates on germ cell were significantly higher in infertile group B, C, D compared to that of the control group ($p < 0.05$). ET-1 expression rates on Leydig cell was significantly lower in all infertile group compared to that of the control group ($p < 0.05$). But, ET-1 expression rates on Sertoli cell was significantly higher in all infertile group compared to that of the control group ($p > 0.05$). In germ cell of infertile group, LH, FSH and prolactin were significantly decreased, and estradiol is increased in positive stain group on ET-1 immunohistochemical stain ($p < 0.05$). VEGF and ET-1 expression were not correlated mean seminiferous tubule diameter ($p > 0.05$).

Conclusions: Abnormal spermatogenesis would be reflected in VEGF expression in germ cell.

Key Words: Vascular endothelial growth factor, Endothelin-1, Spermatogenesis, Testis

cytoplasmic sperm injection, ICSI)

(spermatogenesis)

50~75%

(intra-

(germ cell) ,
 가 2~4
 vascular endothelial growth factor (VEGF) endothelin-1 (ET-1)
 Sertoli , Leydig
 5-9
 가
 VEGF ET-1
 1.
 () ,
 10 ()
 Sertoli
 cell only syndrome, maturation arrest, hypospermatogenesis sloughing and disorganization
 A, B, C D A, B, C,
 D 10 50
 2.
 1)
 (luteinizing hormone, LH),
 hormone, FSH),
 (estradiol),
 2)
 window
 hematoxylin-eosin (H-E)

3)
 (1) VEGF
 4~5 μm
 1 가 가 xylene 5 4 ,
 alcohol 2 3
 , citrate buffer au-
 toclave 15 H₂O₂ 10
 . PBS buffer 2 3
 1:250 VEGF 1
 (mouse monoclonal antibody, Santa Cruz Biotechnol, USA) 4
 biotin streptavidin 30
 PBS 5 3 , AEC
 . Hematoxylene
 mounting solution
 (2) ET - 1
 1:250
 ET-1 1 (mouse monoclonal
 antibody, Abcam Biotechnol, USA)
 4)
 VEGF ET-1
 400
 (-), 25%
 (1+), 25~75% (2+)
 75% (3+) 10,11
 3.
 Fisher's exact test Mann Whitney U test , VEGF ET-1
 Chi-square test
 . p 0.05
 1.
 1) VEGF
 (1)
 VEGF A

D (spermatogonia) +1 2 B, C (20%), 2 (20%) 1 (10%) , +2 C 20%,

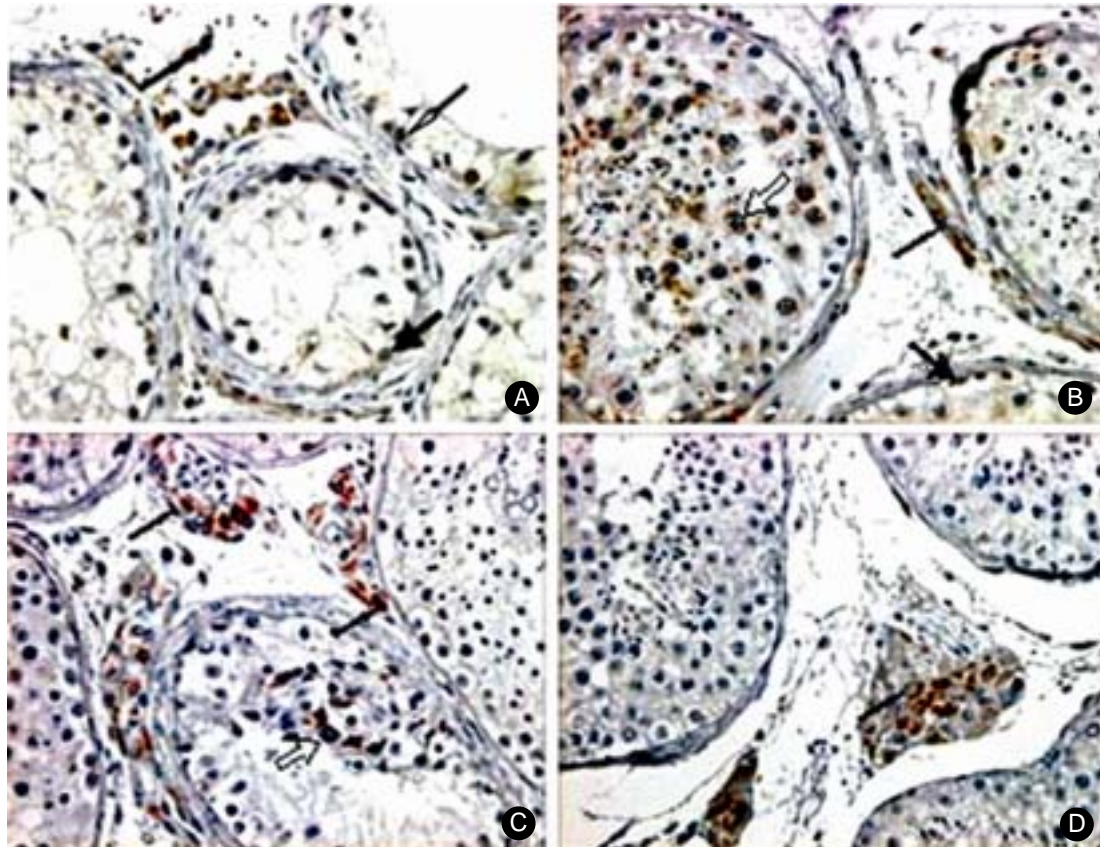


Figure 1. Immunohistochemical stains for VEGF ($\times 400$). **A;** Sertoli cell only syndrome **B;** maturation arrest **C;** hypospermatogenesis **D;** control group. Sertoli cell; thick black arrow, Leydig cell; thin black arrow, Spermatogonia; thin white arrow, Spermatocyte; thick white arrow.

Table 1. VEGF expression rate on germ cell according to the grade of maturation

	No. cases	SG		SC		ST	Overall (%)
		+1 (%)	+2 (%)	+1 (%)	+2 (%)	+1 (%)	
Infertility group	40						
A	10	-	-	-	-	-	-
B	10	2 (20)	-	3* (30)	-	-	3* (30)
C	10	2 (20)	1 (10)	5* (50)	2 (20)	2 (20)	7* (70)
D	10	1 (10)	-	3* (30)	-	-	3* (30)
Control group	10	-	-	-	-	-	-

A; Sertoli cell only syndrome, B; maturation arrest, C; hypospermatogenesis, D; sloughing and disorganization, SG; spermatogonia, SC; spermatocyte, ST; spermatid *, $p < 0.05$ vs control group. calculated by Mann-Whitney U test

30% 10% (spermatocyte) +1 20% (0%~30%)
 3 (30%), 5 (50%) 3 (30%) , +2 10% 가 ,
 C 2 (20%) 30%, (Table 2) (Figure 1).
 70% 30% (spermatid) (3) Leydig
 C +1 2 (20%) Leydig VEGF
 VEGF A, B, C, D
 A , B, C D +1 5 (50%), 6 (60%), 6
 42.5% (30%~70%) (60%), 7 (70%) 5 (50%), +2 5 (50%),
 4 (40%), 2 (20%), 2 (20%) 4 (40%), +3
 C, D 2 (20%), 1
 (Table 1) (Figure 1).
 (2) Sertoli (10%) 1 (10%) (p>0.05). Leydig
 Sertoli VEGF A VEGF 가 ,
 B, C, D 2 (20%), 3 100% 가 ,
 (30%), 3 (30%) 1 (10%) Sertoli
 +1 Sertoli VEGF (Table 2) (Figure 1).

Table 2. VEGF expression rate on Sertoli cell and Leydig cell according to the grade of maturation

	No. cases	Ser (%)		Ley		Overall (%)
		+1 (%)	+1 (%)	+2 (%)	+3 (%)	
Infertility group	40					
A	10	-	5 (50)	5 (50)	-	10 (100)
B	10	2 (20)	6 (60)	4 (40)	-	10 (100)
C	10	3 (30)	6 (60)	2 (20)	2 (20)	10 (100)
D	10	3 (30)	7 (70)	2 (20)	1 (10)	10 (100)
Control group	10	1 (10)	5 (50)	4 (40)	1 (10)	10 (100)

A; Sertoli cell only syndrome, B; maturation arrest, C; hypospermatogenesis, D; sloughing and disorganization, Ser; Sertoli cell, Ley; Leydig cell, In all, p>0.05 vs control group. calculated by Mann-Whitney U test

Table 3. ET-1 expression rate on germ cell according to the grade of maturation

	No. cases	SG (%)	SC (%)	ST (%)	Overall (%)
		+1	+1	+1	+1
Infertility group	40				
A	10	-	-	-	-
B	10	1 (10)	1 (10)	-	2 (20)
C	10	-	1 (10)	-	1 (10)
D	10	1 (10)	2 (20)	1 (10)	3* (30)
Control group	10	-	-	-	-

A; Sertoli cell only syndrome, B; maturation arrest, C; hypospermatogenesis, D; sloughing and disorganization, SG; spermatogonia, SC; spermatocyte, ST; spermatid*; p<0.05 vs control group. calculated by Mann-Whitney U test

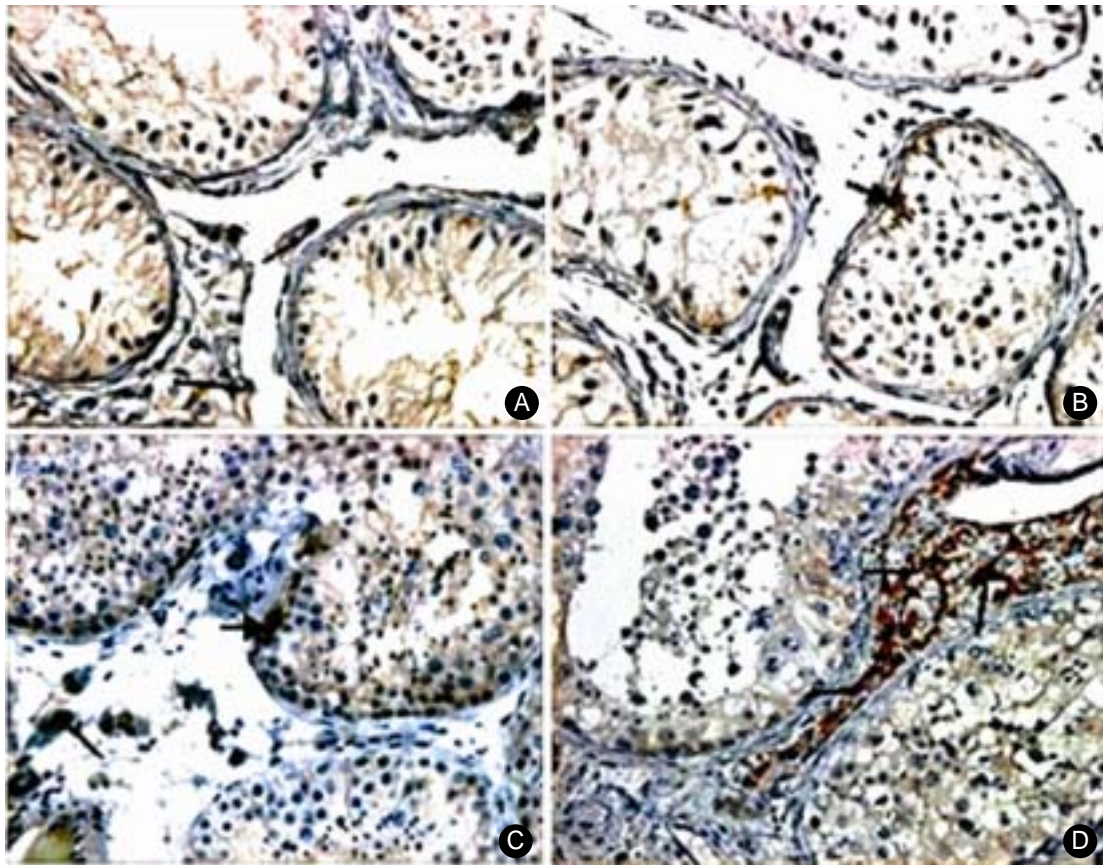


Figure 2. Immunohistochemical stains for VEGF ($\times 400$). **A**; Sertoli cell only syndrome **B**; maturation arrest **C**; hypospERMATogenesis **D**; control group Sertoli cell; thick black arrow Leydig cell; thin black arrow.

2) ET - 1	(2) Sertoli
(1)	Sertoli
ET-1	ET-1
B, C	A, B, C
D	D
+1	+1
1 (10%)	3 (30%)
1 (10%)	6 (60%)
2 (20%)	3 (30%)
1 (10%)	3 (30%)
+1	3 (30%)
ET-1	ET-1
A	37.5% (30%~60%)
B, C	(Table 4) (Figure 2).
D	(3) Leydig
20.0% (10%~30%)	Leydig
	ET-1
	A, B, C, D
	+1
	7 (70%), 6 (60%), 7
	(70%), 4 (40%)
	7 (70%)
	3 (30%)
	+2
	Leydig
	60.0% (40%~70%)
	100%

(Table 3) (Fi-

gure 2).

ET-1

(p<0.05).

Table 4. ET-1 expression rate on Sertoli cell, Leydig cell and germ cell according to the grade of maturation

	No. cases	Ser (%)		Ley (%)		Overall
		+1	+1	+2		
Infertility group	40					
A	10	3* (30)	7 (70)	- *	7* (70)	
B	10	6* (60)	6 (60)	- *	6* (60)	
C	10	3* (30)	7 (70)	- *	7* (70)	
D	10	3* (30)	4 (40)	- *	4* (40)	
Control group	10	-	7 (70)	3 (30)	10 (100)	

A; Sertoli cell only syndrome, B; maturation arrest, C; hypospermatogenesis, D; sloughing and disorganization, Ser; Sertoli cell, Ley; Leydig cell, Germ; germ cell, *; p<0.05 vs control group. calculated by Mann-Whitney U test

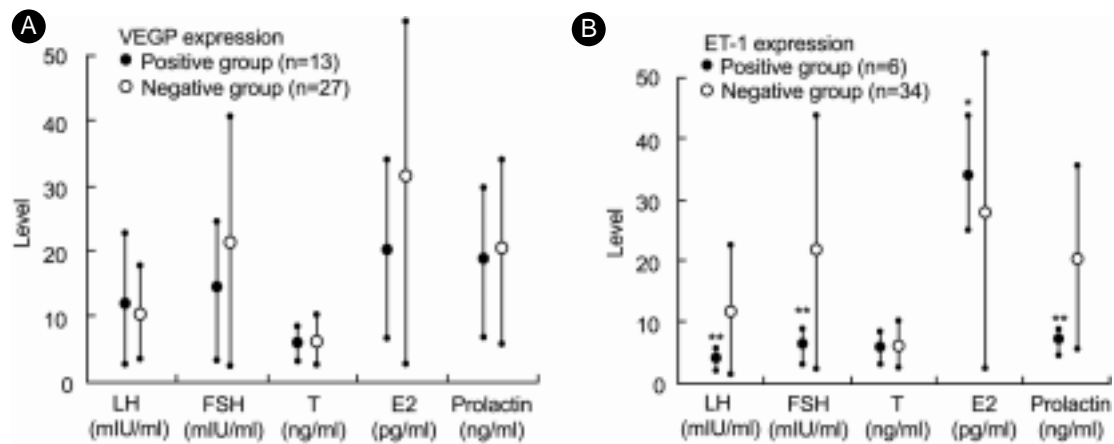


Figure 3. The relationship between serum hormonal level and VEGF, ET-1 expression on germ cell in infertility group. *; p<0.05, **; p<0.001.

Table 5. Correlation with expression of VEGF and ET-1 on germ cell in infertility group

	ET-1	
	Positive rate (%)	Negative rate (%)
VEGF		
Positive rate (%)	2 (5.0)	11 (27.5)
Negative rate (%)	4 (10.0)	23 (57.5)

Calculated by Chi-square test

3) VEGF ET - 1
VEGF ET-1
32.5% 15.0%
VEGF ET-1
(p>0.05) (Table 5).

3. VEGF ET - 1
VEGF ET-1
LH, FSH, testosterone, estradiol prolactin
6.40±5.85 mIU/ml 5.58±4.20 mIU/ml, 11.16±7.13 mIU/ml 13.72±11.62 mIU/ml, 4.69±1.39 ng/ml 4.51±1.30 ng/ml, 22.85±12.04 pg/ml 31.99±16.71 pg/

(Table 4) (Figure 2).

ml, 15.10±9.44 ng/ml 11.51±7.39 ng/ml (p>0.05, crine effect) (paracrine effect)

). ET-1 VEGF

LH, FSH, testosterone, estradiol prolactin

2.92±1.36 mIU/ml 6.36±4.94 mIU/ml, 4.38±1.74 mIU/ml 14.38±10.52 mIU/ml, 4.51±1.65 ng/ml 4.58±1.28 ng/ml, 37.23±6.09 pg/ml 27.99±15.43 pg/ml, 5.36±0.92 ng/ml 13.41±7.85 ng/ml testosterone

(p=0.001, <0.001, >0.05, 0.01, <0.001,) (Figure 3).

Huminiiecki ⁶ VEGF가 VEGF가

Korpelainen ⁷ VEGF가 VEGF가

가 가 가 (fi-brinogen) (fibrin)가

c-myc, p53, Bax Fas, Bcl-2, Obermair ¹⁸ (in vitro fer-tilization, IVF) VEGF가

c-kit ¹²⁻¹⁶ 가 가 가 VEGF 가

(vasculogenesis), (angio-genesis), (embryogenesis), (wound healing), (myocardial ischemia), (ocular neovascular disease)

가 가 가 VEGF 가 A 가 Se-VEGF 가

VEGF VEGF B, C D C 가 VEGF

Ergün ⁵ VEGF Leydig 가 Sertoli 가 (auto-Endothelin ET-1 1988 Yanagisawa

ephrine 가 , norepin-
 100 , angiotensin II 10 Leydig ET-1
^{20,21} ET-1 Sertoli Leydig
 가 ^{21,22} ET-1 Leydig , Sertoli
 ET_A ET_B가 ET_A ET-1 ^{8,9}
 ET_B Sertoli 가 ET-1 Se-
 가 ^{9,23} ET_A Leydig ET-1
 ET_B Fantoni ³⁰ ET-1
 Leydig , Sertoli ET_A Romanelli ³¹ (leu-
 ET_B (lamina propria) tenizing hormone releasing hormone, LHRH) ET-1
 ET-1 ⁹
 , , , Ergul ³² ET-1
^{8,9,26,27} Leydig
 Collin ²⁷ Sprague-Dawley rat
 , ET-1
 , ET-1 ET_A
 ET-1
 ET_B ET- 가 VEGF
 1 ET-3 , VEGF
 nitric oxide (NO) prostacyclin ET-1
²⁰
 (myoid cell)
 Tripiciano ²⁸ 가
 Sertoli ECE-1 (endothelin converting en-
 zyme-1) VEGF ET-1
 arginine
 vasopressin, TGF-β, PDGF, oxytocin, prostaglandin
 adreno-
 medullin ²⁹ Sertoli
 ET-1 ,
 ET-1

1. Hargreave TB. Introduction. In: Hargreave TB, Soon TE, editors. *The management of the male infertility*. Singapore: PG Publishing 1990; 2-21.
2. Hedger MP, Meinhardt A. Cytokines and the immune-testicular axis. *J Reprod Immunol* 2003; 58: 1-26.
3. Holstein AF, Schulze W, Davidoff M. Understanding spermatogenesis is a prerequisite for treatment. *Reprod Biol Endocrinol* 2003; 1: 107.
4. Huleihel M, Lunenfeld E. Regulation of spermatogenesis by paracrine/autocrine testicular factors. *Asian J Androl* 2004; 6: 259-68.
5. Ergün S, Kilic N, Harnait S, Paust HJ, Ungefroren H, Mukhopadhyay A, et al. Microcirculation and the vascular control of the testis. *Adv in Experim Med and Biol* 1997; 424: 163-80.
6. Huminiecki L, Chan HY, Lui S, Poulosom R, Stamp G, Harris AL, Bicknell R. Vascular endothelial growth factor transgenic mice exhibit reduced male fertility and placental rejection. *Mol Hum Reprod* 2001; 7: 255-64.
7. Korpelainen EI, Karkkainen MJ, Tenhunen A, Laksso M, Rauvala H, Vierula M, et al. Overexpression of VEGF in testis and epididymis causes infertility in transgenic mice: Evidence for nonendothelial targets for VEGF. *J Cell Biol* 1998; 143: 1705-12.
8. Maggi M, Barni T, Orlando C, Fantoni G, Finetti G, Vannelli GB et al. Endothelin-1 and its receptors in human testis. *J Androl* 1995; 16: 213-24.
9. Ergün S, Harnait, Paust HJ, Mukhopadhyay AK, Holstein AF. Endothelin and endothelin receptor A and B in the human testis. *Anat Embryol* 1999; 199: 207-14.
10. Nalbandian A, Dettin L, Dym M, Ravindranath N. Expression of vascular endothelial growth factor receptors during male germ cell differentiation in the mouse. *Biol of Reprod* 2003; 69: 985-94.
11. Senger DR, Connelly DT, Van De Water L, Feder J, Dvorak HF. Purification and NH₂-terminal amino sequence of guinea pig tumor secreted vascular permeability factor. *Cancer Res* 1990; 50: 1774-8.
12. Blanchard KT, Allard EK, Boekelheide K. Fate of germ cells in 2, 5-hexanedione-induced testicular injury. *Toxicol Appl Pharmacol* 1996; 136: 5-12.
13. Richburg JH, Boekelheide K. Mono- (2-ethylhexyl) phthalate rapidly alters both Sertoli cell vimentin filaments and germ cell apoptosis in young rat testes. *Toxicol Appl Pharmacol* 1996; 137: 42-50.
14. Kim ED, Barqawi AZ, Seo JT, Meacham RB. Apoptosis: its importance in spermatogenic dysfunction. *Urol Clin North Am* 2002; 29: 755-65.
15. Zhang XW, Xu B. Differential regulation of p53, c-myc, Bcl-2, Bax and AFP protein expression, and caspase activity during 10-hydroxycamptothecin-induced apoptosis in Hep G2 cells. *Anticancer Drugs* 2000; 11: 747-56.
16. , , .
c-kit
2003; 44: 1124-30.
17. Zachary I. Vascular endothelial growth factor. *Int J Bio & Cell Biol* 1998; 30: 1169-74.
18. Obermair A, Obruca A, Phl M, Kaider A, Vales A, Leodolter S, et al. Vascular endothelial growth factor and its receptor in male fertility. *Fertil Steril* 1999; 72: 269-75.
19. Yanagisawa M, Kurihara H, Kimura S, Tomobe Y, Kobayashi M, Mitsui Y et al. A novel vasoconstrictor peptide produced by vascular endothelial cells. *Nature* 1988; 332: 411-5.
20. Ellahham SH, Charlon V, Abassi Z, Calis KA, Choucair WK. Bosentan and the endothelin system in congestive heart failure. *Clin Cardiol* 2000; 23: 803-7.
21. Fantoni G, Morris PL, Forti G, Vannelli GB, Orlando C, Barni T et al. Endothelin-1: A new autocrine/paracrine factor in rat testis. *Am J Physiol* 1993; 265: E267-74.
22. Matsumoto H, Suzuki N, Onda H, Fujino M. Abundance of endothelin-3 in rat intestine, pituitary gland and brain. *Biochem Biophys Res Commun* 1989;

- 164: 74-80.
23. Sakaguchi H, Kozuka M, Hirose S, Ito T, Hagiwara H. Properties and localization of endothelin-1-specific receptors in rat testicles. *Am J Physiol* 1992; 263: R15-8.
 24. Ohlstein EH, Douglas SA. Endothelin-1 modulates vascular smooth muscle structure and vasomotion: Implications in cardiovascular pathology. *Drug Develop Res* 1993; 29: 108-28.
 25. Takuwa Y. Endothelin in vascular and endocrine system: Biological activities and its mechanism of action. *Endocr J* 1993; 40: 489-506.
 26. Conte D, Morris PL, Forti G, Vannelli GB, Orlando C, Barni T et al. Endothelin stimulates testosterone secretion by rat Leydig cells. *J Endocrinol* 1993; 136: R1-4.
 27. Collin O, Damber JE, Bergh A. Effects of endothelin-1 on the rat testicular vasculature. *J Androl* 1996; 17: 360-6.
 28. Tripiciano A, Peluso C, Morena AR, Palombi F, Stefanini M, Ziparo E et al. Cyclic expression of endothelin-converting enzyme-1 mediates the functional regulation of seminiferous tubule contraction. *J Cell Biol* 1999; 145: 1027-38.
 29. Rossi F, Ferraresi A, Romagni P, Silvestroni L, Santemma V. Angiotensin II stimulates contraction and growth of testicular peritubular myoid cells in vitro. *Endocrinol* 2002; 143: 3096-104.
 30. Fantoni G, Morris PL, Forti G, Vannelli GB, Orlando C, Barni T et al. Endothelin-1: A new autocrine/paracrine factor in rat testis. *Am J Physiol* 1993; 265: E267-74.
 31. Romanelli F, Fillo S, Isidori A, Conte D. Stimulatory action of endothelin-1 on rat Leydig cells: Involvement of endothelin-A subtype receptor and phospholipase A2-arachidonate metabolism system. *Life Sciences* 1997; 61: 557-66.
 32. Ergul A, Glassberg MK, Majercik MH, Puett D. Endothelin-1 promotes steroidogenesis and stimulates protooncogene expression in transformed murine Leydig cells. *Endocrinology* 1993; 132: 598-603.
-